
An Overview of the Application Process

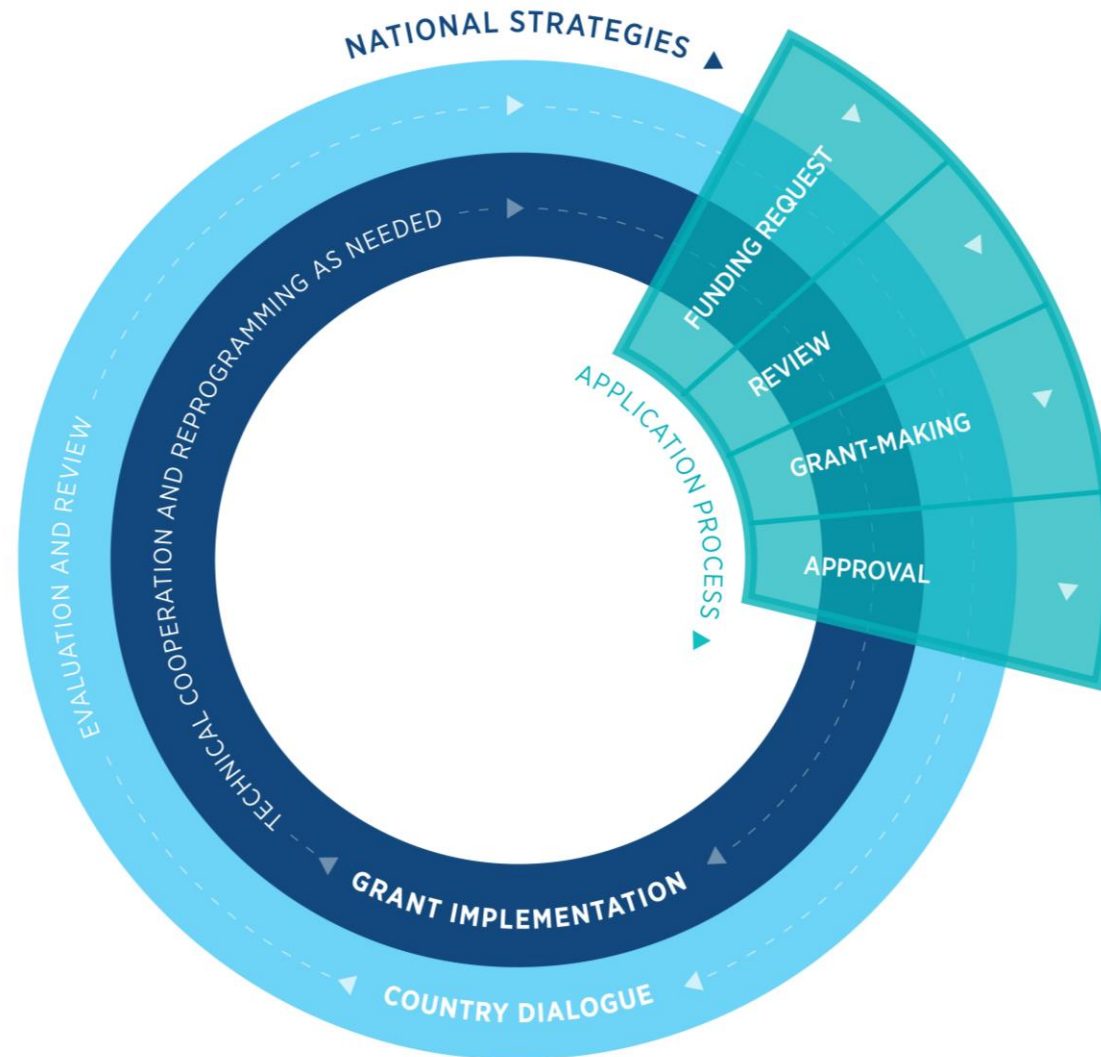
17 SEPTEMBER, 2019

An Overview of the Application Process

1. Background
2. Applying for Funding
3. From Submission to Signatures
4. Lessons Learnt
5. Trainings and Resources

Background

The Funding Cycle



 APPLICATION PROCESS :
6-9 MONTHS

 GRANT IMPLEMENTATION
3 YEARS

Background

Eligibility & Allocation

Eligibility is determined by a country's income level and disease burden.

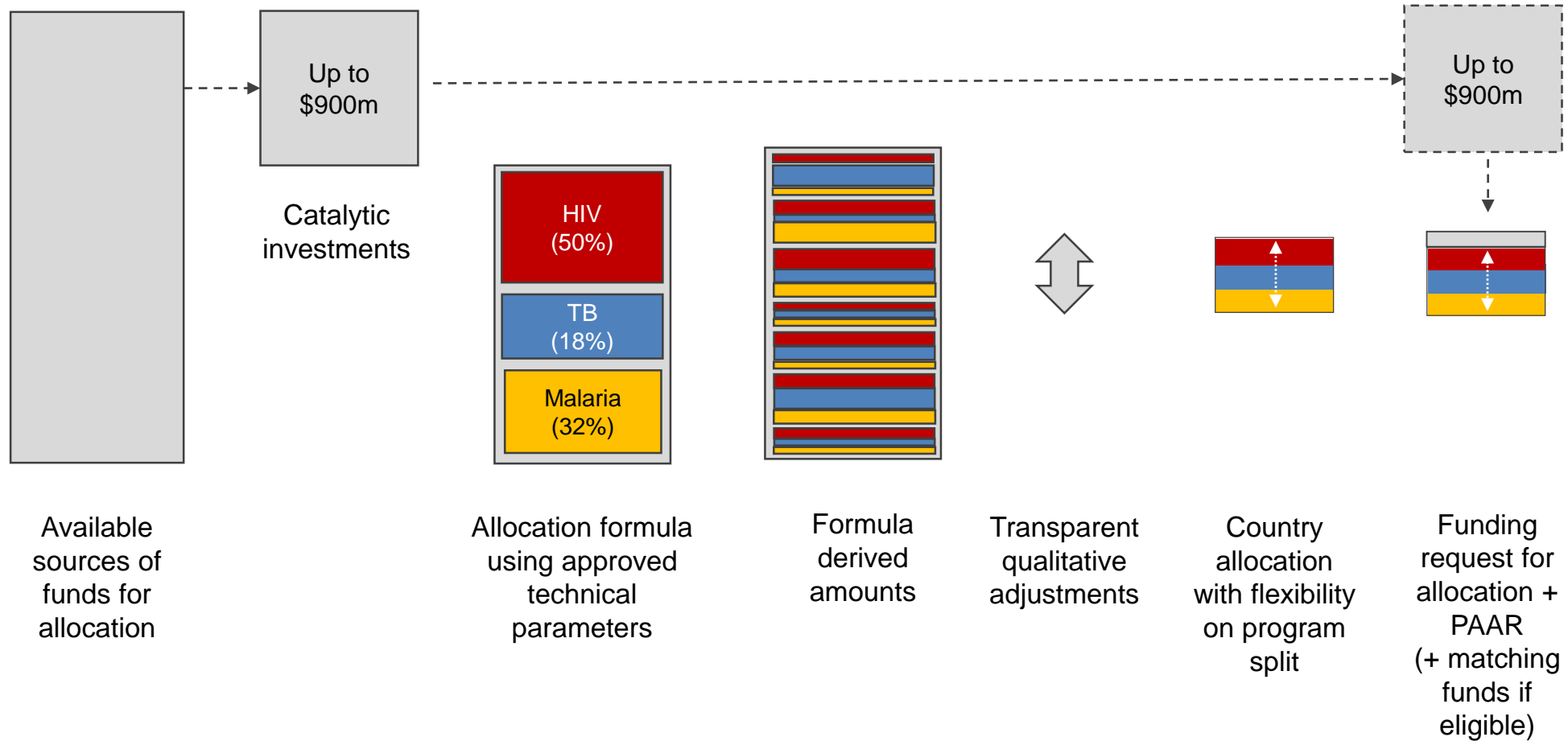
Income level	Disease Burden	Eligibility
Low Income Countries (LICs)	No restriction	✓
Lower-Middle Income Countries (LMICs)	No restriction	✓
Upper-Middle Income Countries* (UMICs)	High	✓
	Not High	✗
High Income Countries	n/a	✗

The Global Fund Eligibility List identifies country components eligible to receive an allocation **BUT eligibility does not guarantee an allocation**

* Upper-middle income countries not on the OECD Development and Assistance Committee's list of recipients of Official Development Assistance are not eligible unless they have demonstrated barriers to providing funding for interventions for key populations, as supported by the country's epidemiology. Upper-middle income countries classified by the International Development Association (IDA) as 'Small Island Economy Exceptions' are eligible regardless of disease burden

Background

Eligibility & Allocation



Background

Catalytic Investments



Matching funds

A matching pool available to select countries at the time of allocation to incentivize funding requests that include key strategic priorities.

Multi-country (regionals)

Funds are for a number of select multicountry initiatives, which are critical for the global response against HIV, TB and malaria.

Strategic initiatives

Strategic areas not able to be addressed through country allocations, e.g. Emergency Fund, funding to strengthen community & civil society engagement, etc.

Background

Portfolio Categorization



Focused

- Smaller portfolios
- Lower disease burden
- Lower mission risk

Core

- Larger portfolios
- Higher disease burden

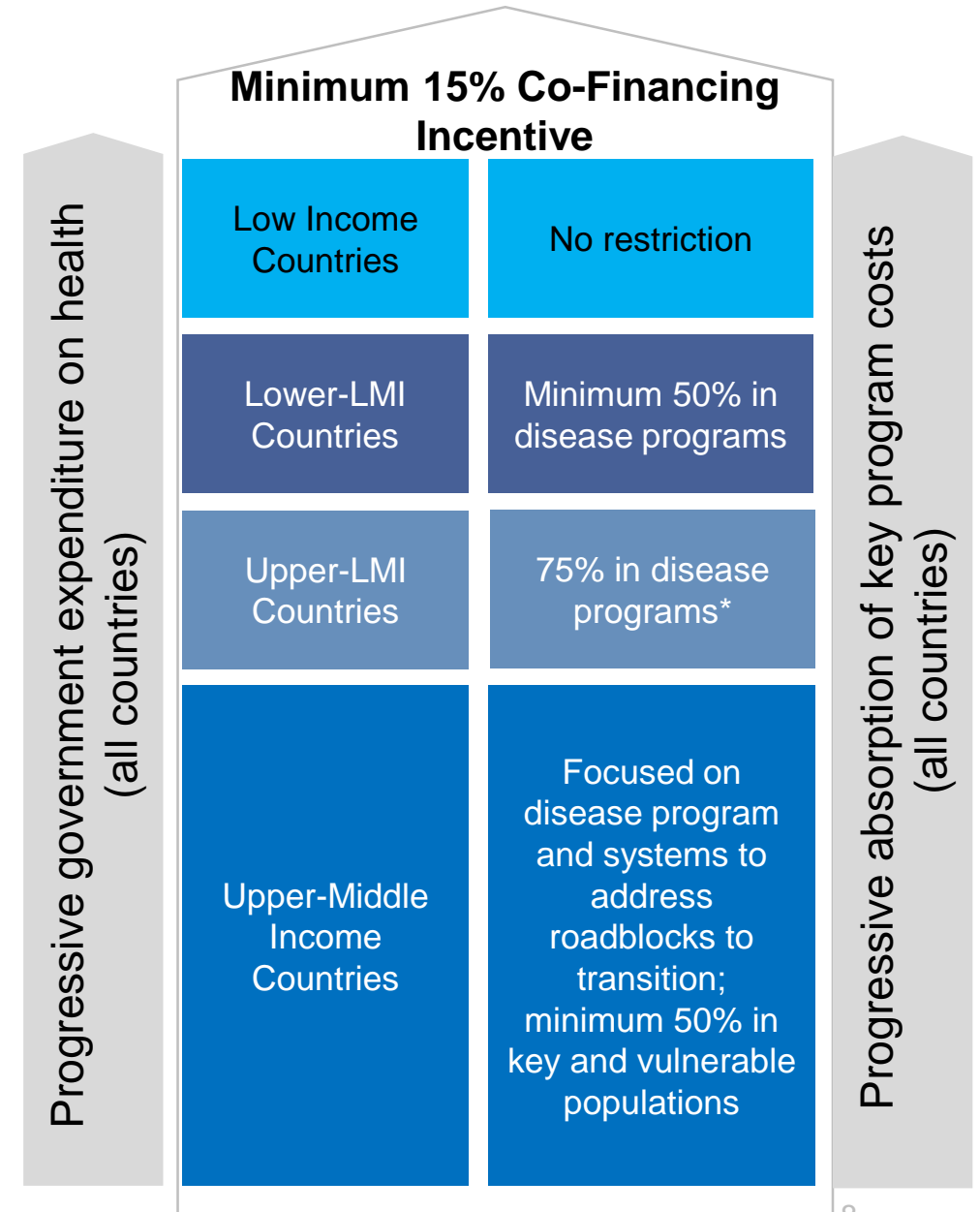
High Impact

- Very large portfolios
- Mission-critical disease burden

Background

Co-Financing Requirements to Access Allocations

- Two **core requirements** to access an allocation:
 - 1) Progressive government expenditure on health
 - 2) Progressive absorption of key program costs
- In addition, a co-financing incentive of **at least** 15% of the allocation available to countries if they make and realize *additional commitments* with the following focus:
 - More flexibility to focus on health systems in LICs and LMICs
 - More targeted focus on disease programs, key and vulnerable populations, and transition and sustainability priorities as countries move along the development continuum
- Processes for *negotiating, tracking, reviewing, and confirming commitments* are embedded into Global Fund access to funding processes (country dialogue, Funding Request and Technical Review Panel review, grant-making, Grant Approval Committee Review, Board approval)



Background

Application Approach

Full Review



**Program
Continuation**



**Tailored for National
Strategic Plans**



**Tailored for Focused
Portfolios**



**Tailored for
Transition**



Background

Application Approach

1: Is the applicant pre-identified for the NSP Application Approach?	If YES → NSP
2: Is the applicant required to submit a transition application approach?	If NO → go to 2
3: Is the applicant a focused country?	IF YES → Transition
4: Does the grant end by 30 June 2021?	If NO → go to 3
5: Does the applicant meet the Program Continuation (PC) criteria?	If YES → FOCUSED
4: Does the grant end by 30 June 2021?	If NO → go to 4
5: Does the applicant meet the Program Continuation (PC) criteria?	If YES → go to 5 If NO → postpone decision until grant performance is known
5: Does the applicant meet the Program Continuation (PC) criteria?	If YES → PROGRAM CONTINUATION
5: Does the applicant meet the Program Continuation (PC) criteria?	If NO → FULL REVIEW

Background

Program Continuation Criteria

1. Performance of A1, A2, or B1 in the 2017 – 2019 cycle

2. The applicant did not use the program continuation application approach in the 2017-2019 cycle*

3. Less than 30% change in 2020-2022 allocation vs. allocation in 2017-2019

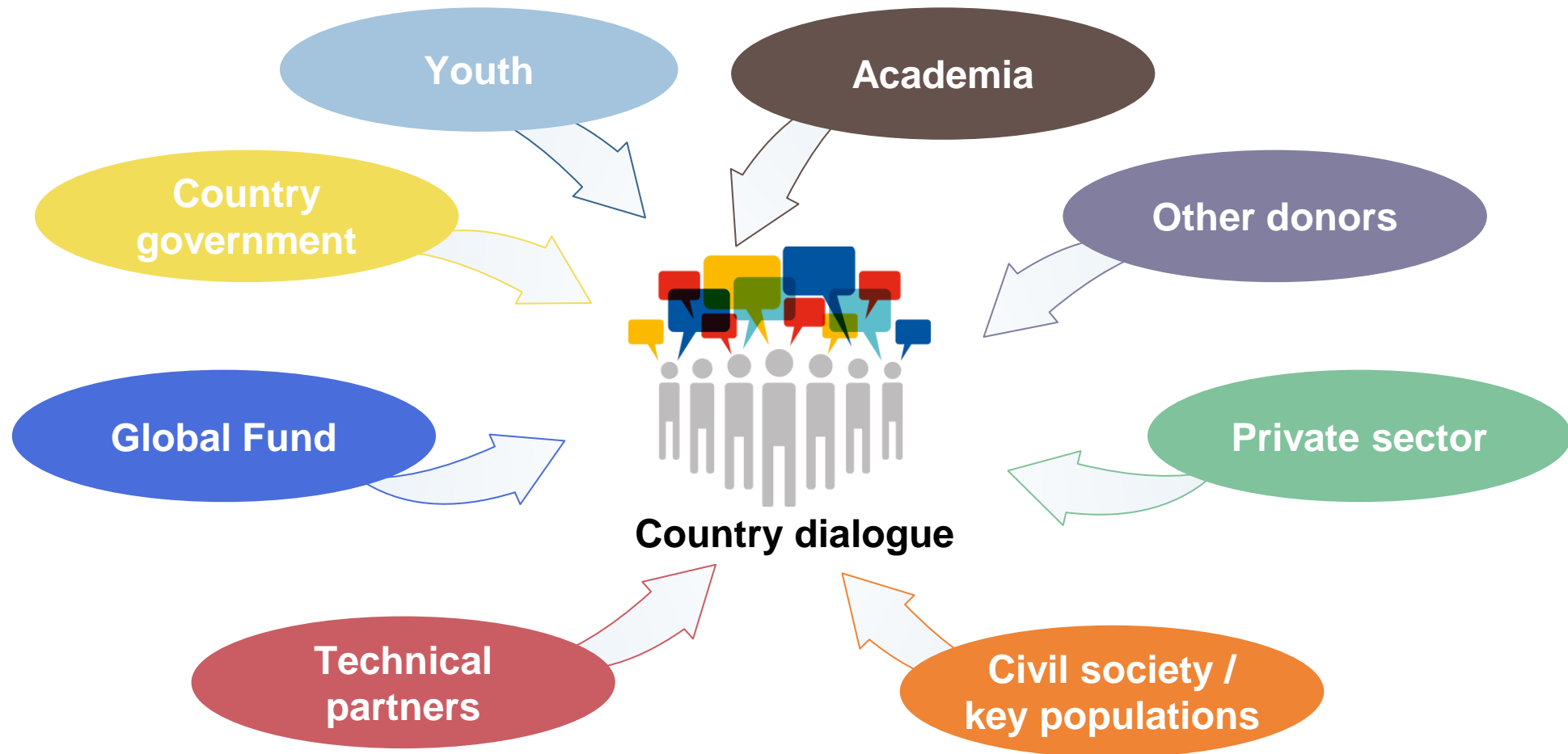
4. Do not envisage need for material change in the program**

*Note if an applicant used the program continuation approach in the 2017-2019 cycle, but undertook a material revision to their grant during the course of the cycle, they could be eligible for program continuation.

**Based on input from Secretariat

Applying for Funding

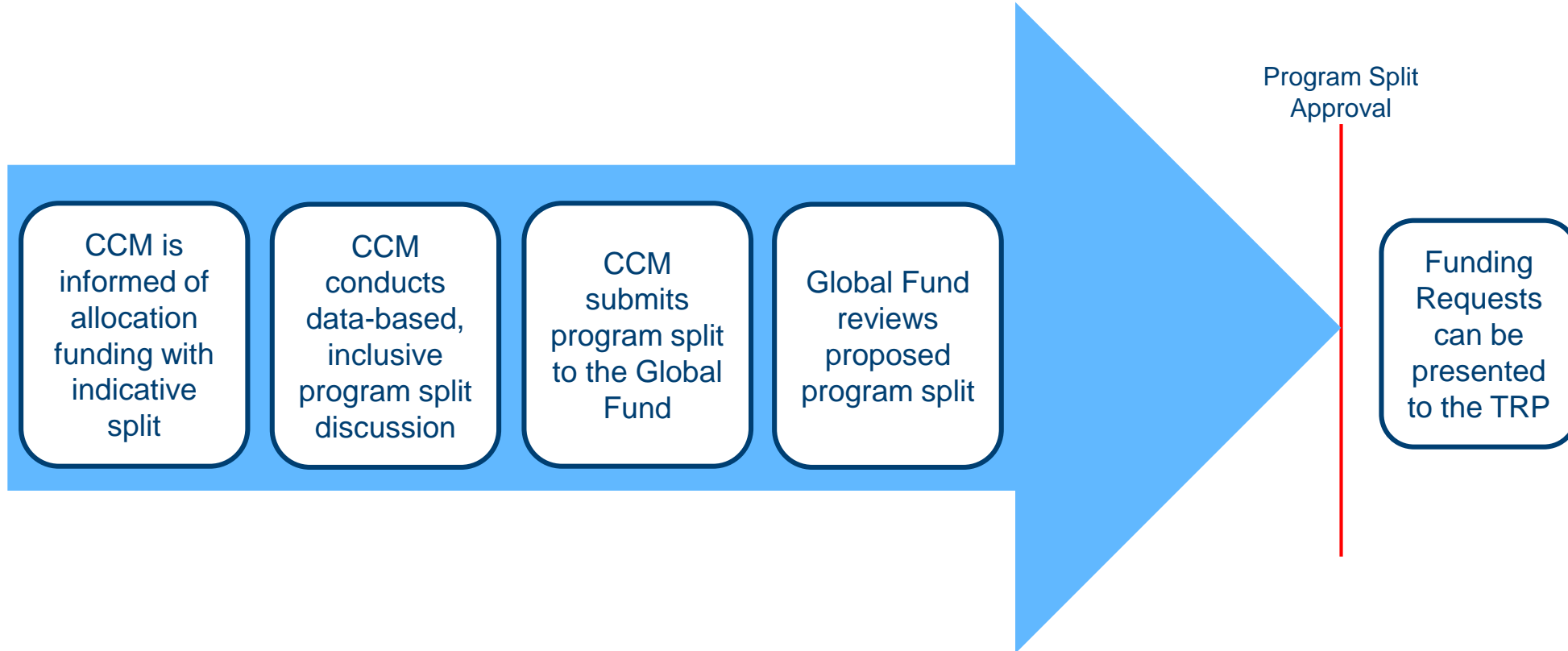
Inclusive Country Dialogue



These actors should be convened by the CCM as the CCM is responsible for submitting the funding request and nominating the Principal Recipient(s) however the dialogue may expand beyond the CCM

Applying for Funding

Program Split process

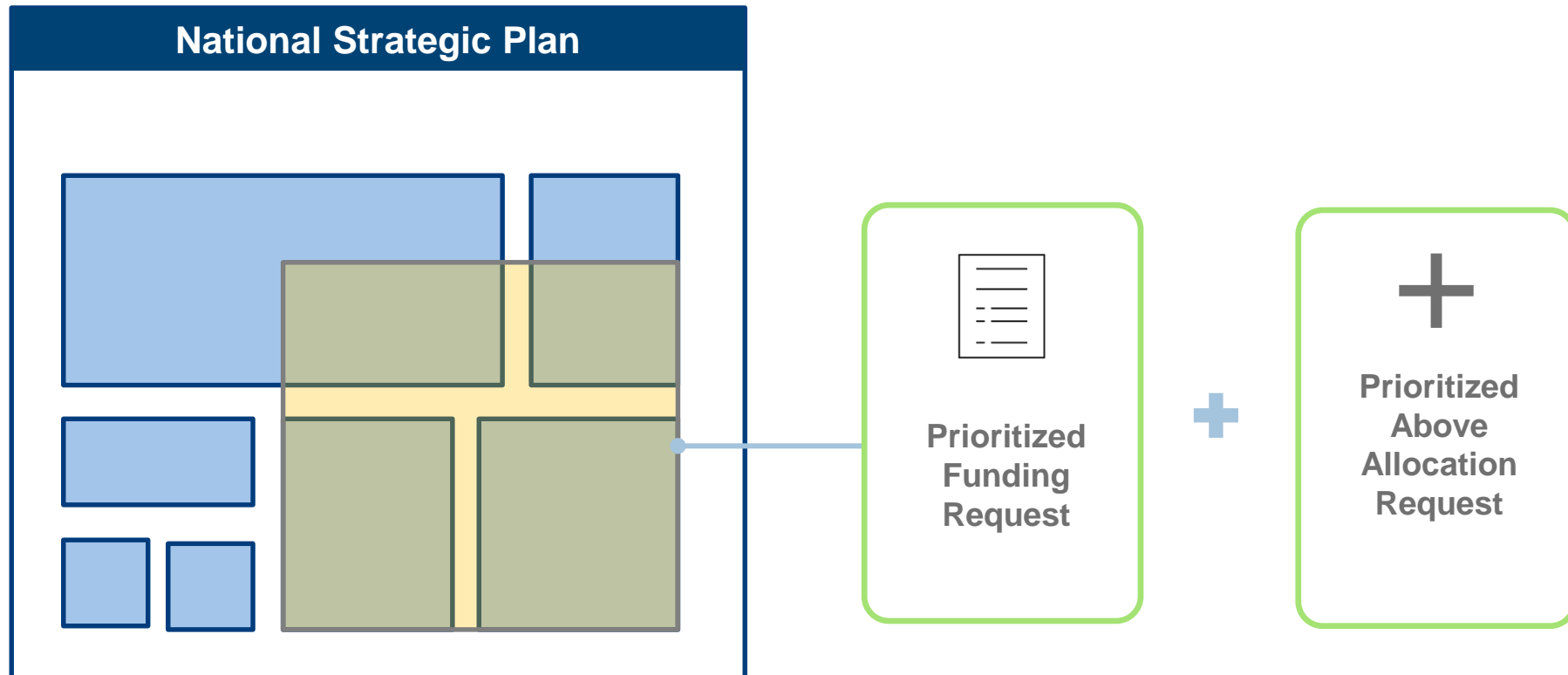


The Secretariat will transparently communicate in the allocation letter where allocation-related decisions or outcomes have intended implications around use of funds and closely monitor any changes to the program split for those components.

Applying for Funding

Alignment with National Strategic Plans

The allocation-based funding model emphasizes **alignment to country processes**, and it aims to incentivize the development of **robust, costed and prioritized National Strategic Plans** as well as the overall national health strategy



Applying for Funding

Tailored for NSP

- Invitation to refer to NSP (instead of narrative) in every section
- Focus is on prioritization, efficiency, and sustainability
- Additional tables for improved structure
- Can opt in to Tailored for Focused or Full Review, depending on portfolio

NSP



- 8 pages
- 4 sections

Applying for Funding

Full Review

Full Review



- 9 pages
- 4 sections

- Most comprehensive application approach for the 2020-2022 cycle
- Additional tables for improved structure & organization of applicant responses

Applying for Funding

Program Continuation

Program Continuation



- 5 pages
- 9 questions

Can Opt-In to Full Review

- Streamlined application approach for well-performing Core and High Impact countries
- Narrow scope of questions to confirm appropriateness of continuing current program
- Required annexes now submitted with Funding Request

Applying for Funding

Tailored for Focused Portfolios

- Streamlined application approach for Focused Portfolios
- Use of tables for better organization and clarity of applicant responses

Tailored for Focused Portfolios



- 7 pages
- 3 sections

Applying for Funding

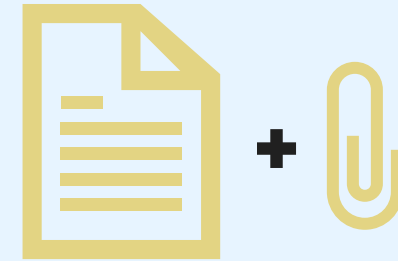
Tailored for Transition

- Same narrative questions as Focused + transition annex + transition workplan
- Streamlined application approach
- Use of tables for better organization and clarity of applicant responses

Transition application requested for applicants:

- Receiving transition funding or had previously received transition funding
- Projected to move to high income
- Identified for contextual reasons

Tailored for Transition



- 7 pages
- 3 sections
- Transition Annex

Applying for Funding

Thematic Sections in each Funding Request

Context

Request

Implementation

Sustainability



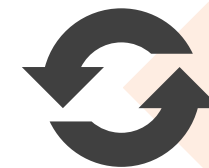
Country Context



Funding Request Prioritization



Implementation Arrangements



Co-financing, Sustainability & Transition



Human Rights and Gender



Opportunities for Integration



Risk



Value for Money

Key Annexes



Applying for Funding

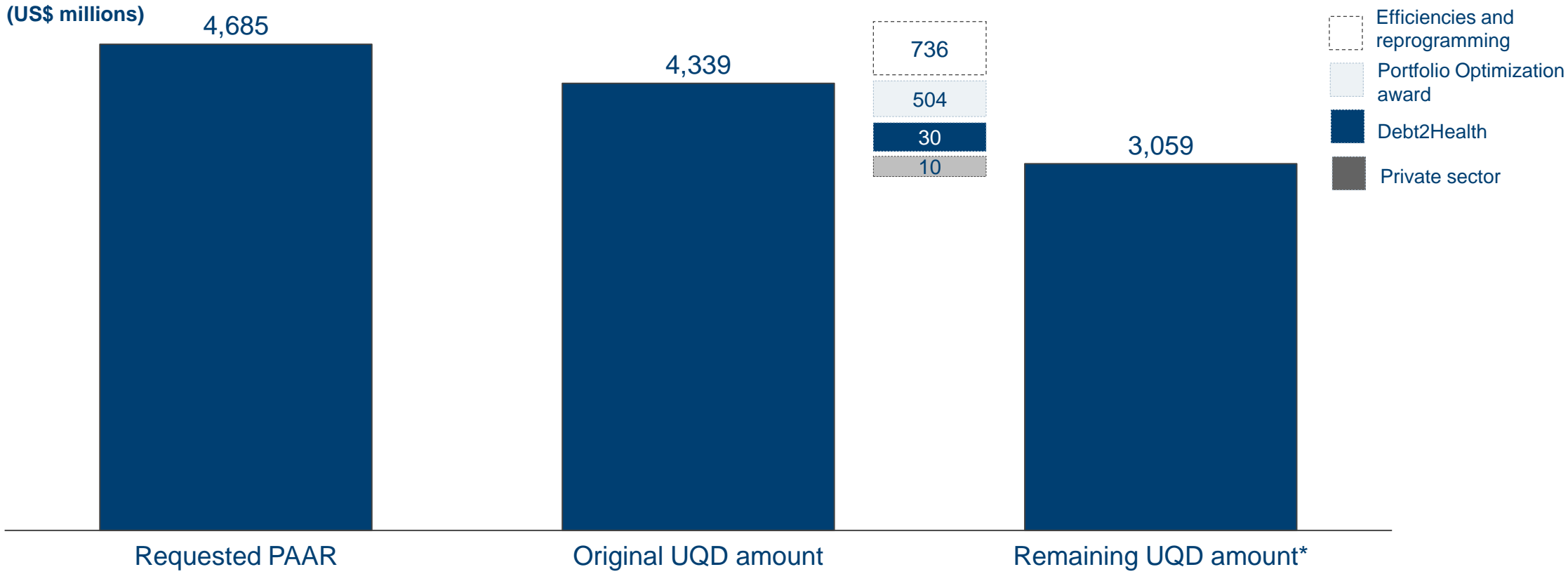
Prioritized Above Allocation Request

PRIORITIZED ABOVE ALLOCATION REQUEST (PAAR)					
Applicant Priority Rating	Module	Intervention	Requested amount (grant currency)	Requested amount (USD)	Brief Rationale, including expected outcomes and impact including service delivery targets in line with performance framework indicators (applicant language)
Drop-down menu with options 'Low', 'Medium', 'High.'	Drop-down menu with list of modules in performance framework, based on component selected	Drop-down menu with list of interventions in performance framework, based on selected module and component	Numeric field	Calculated field that converts incremental request to USD.	Free text, no char limit

The PAAR is a list of prioritized and costed requests that cannot be funded by the allocation. Approved requests are placed on the Register of Unfunded Quality Demand

Applying for Funding

Prioritized Above Allocation Request to Unfunded Quality Demand (UQD)



Source: Access to Funding database
 As of 1 July 2019
 *Expected UQD amount remaining in anticipation of full Portfolio Optimization award amounts (waves 1-3) being incorporated into grants.

From Submission to Signatures

Screening for CCM Eligibility 1&2

- 1 Transparent and inclusive funding request development process
- 2 Open and transparent PR selection process
- 3 Overseeing program implementation and having an oversight plan
- 4 Document the representation of affected communities
- 5 Ensure representation of non-governmental members through transparent and documented processes
- 6 Develop, publish and follow a policy to manage conflict of interest that applies to all CCM members, across all CCM functions

1 and 2
assessed at
FR
submission

3 to 6
monitored
on going
basis

From Submission to Signatures

The Technical Review Panel

The Technical Review Panel is an independent, impartial team of experts appointed to ensure Global Fund investments will achieve highest impact through a rigorous technical assessment.

Inputs

Reviews: Funding request + key annexes

Considers:

- Secretariat Briefing Note
- Previous TRP forms

TRP review criteria

Maximizing impact against HIV, TB, and malaria

Building resilient and sustainable systems for health

Promotes and protects human rights and gender equality

Increasing effectiveness and efficiency: program implementation

Sustainability and co-financing

TRP outcome: Review and Recommendation Form

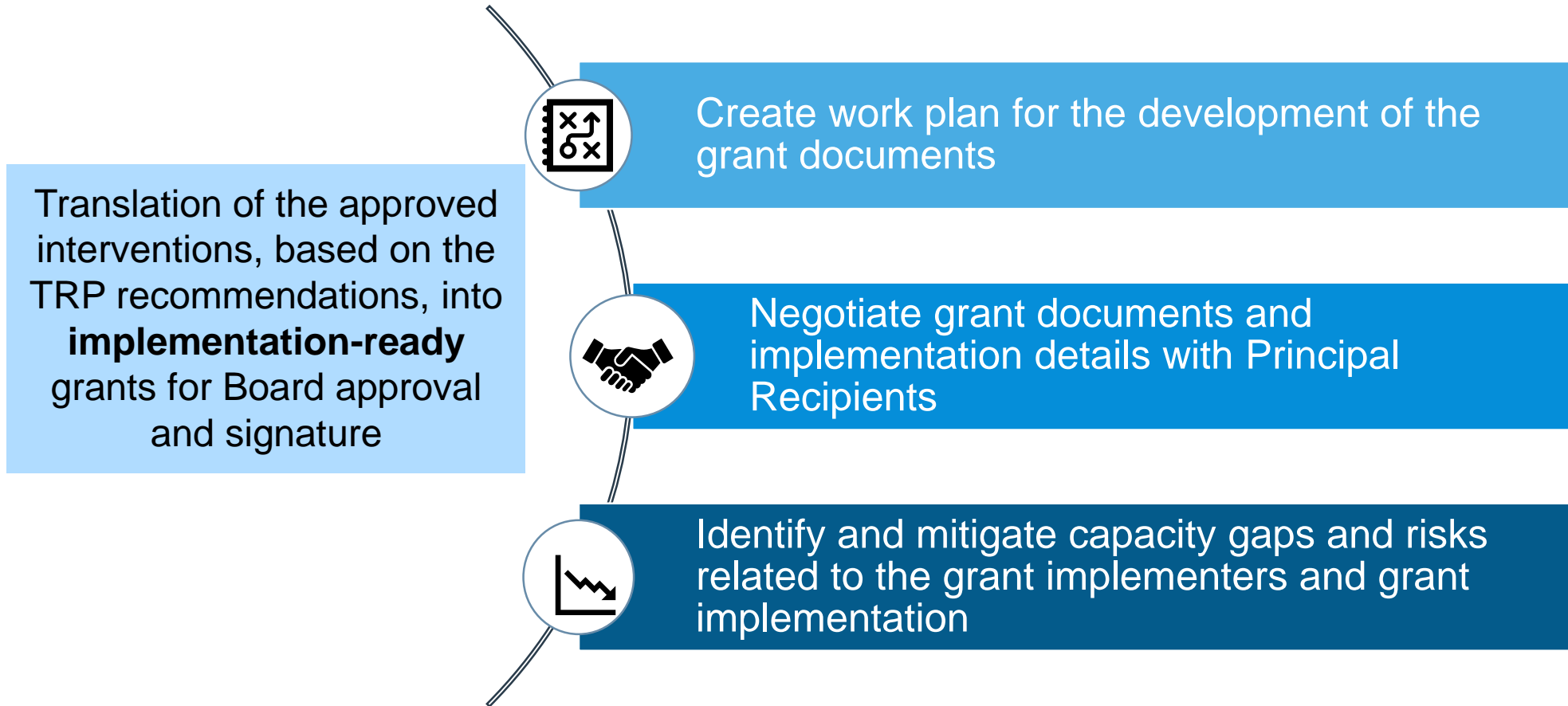
Grant-making: with or without adjustments
OR
Iteration: revise and resubmit, addressing TRP comments

Recommendation for Unfunded Quality Demand from the PAAR

May recommend re-prioritization of interventions within the funding request or PAAR, as applicable

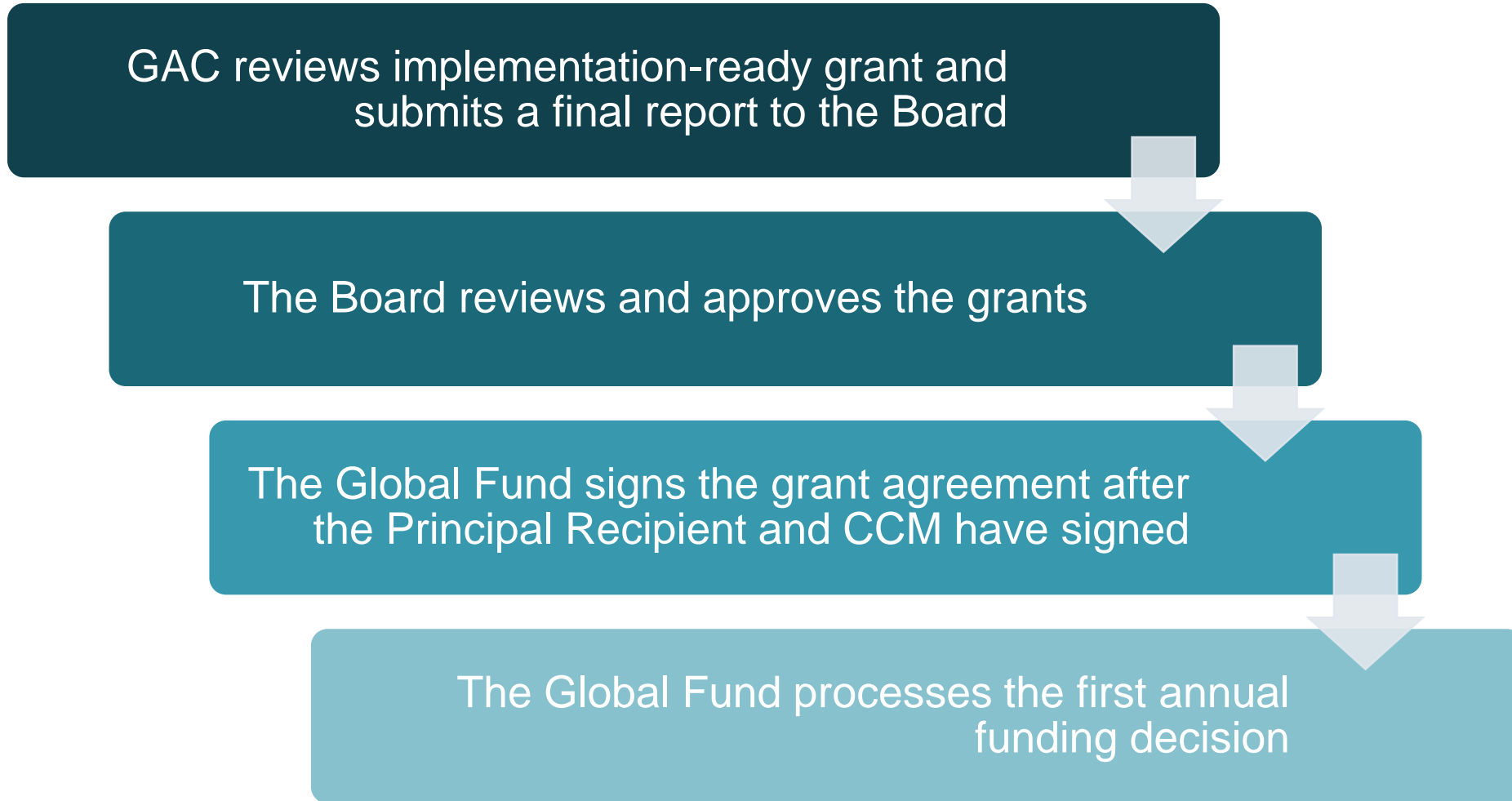
From Submission to Signatures

Grant Making



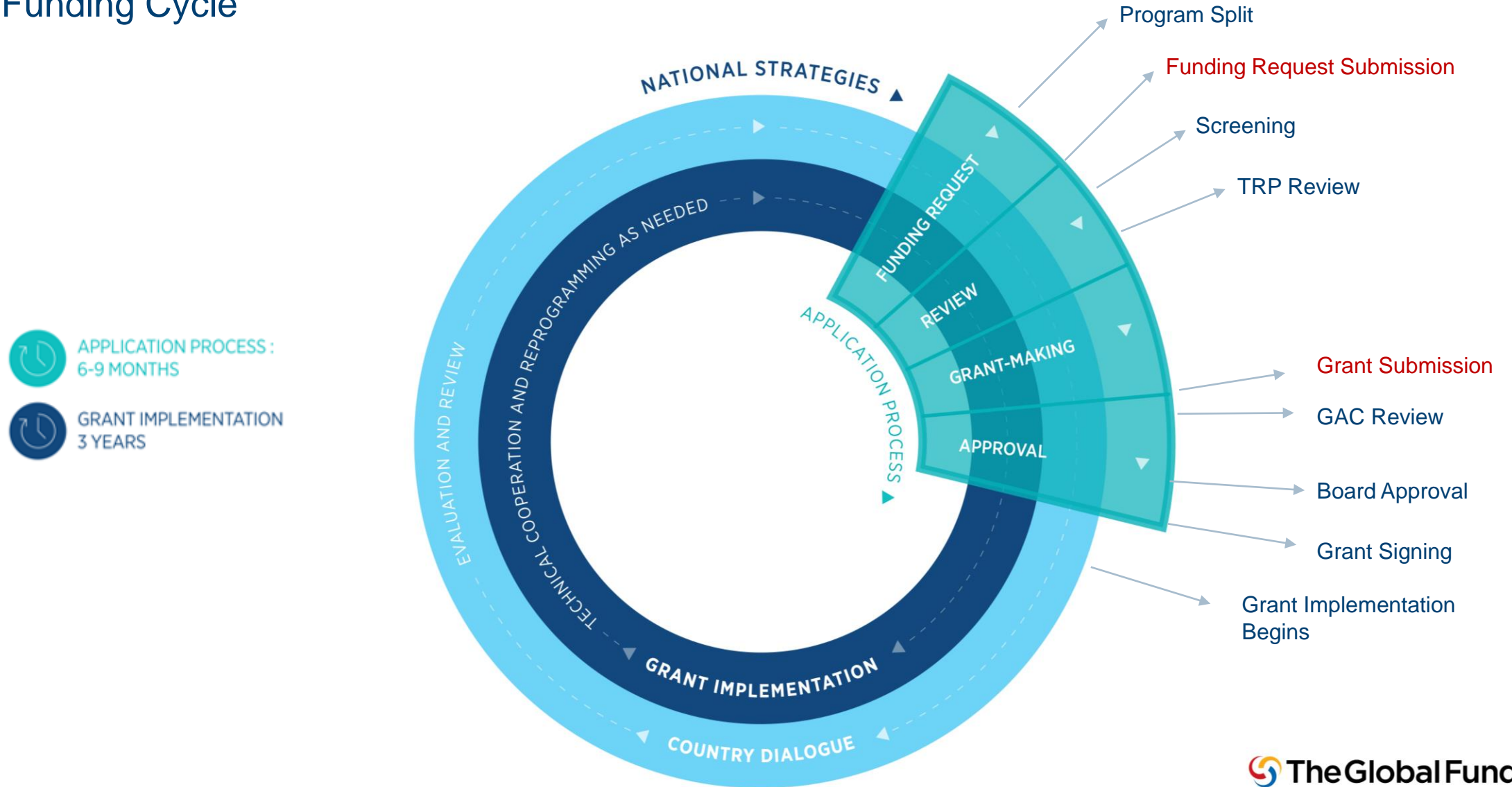
From Submission to Signatures

The Grant Approvals Committee & Board approval



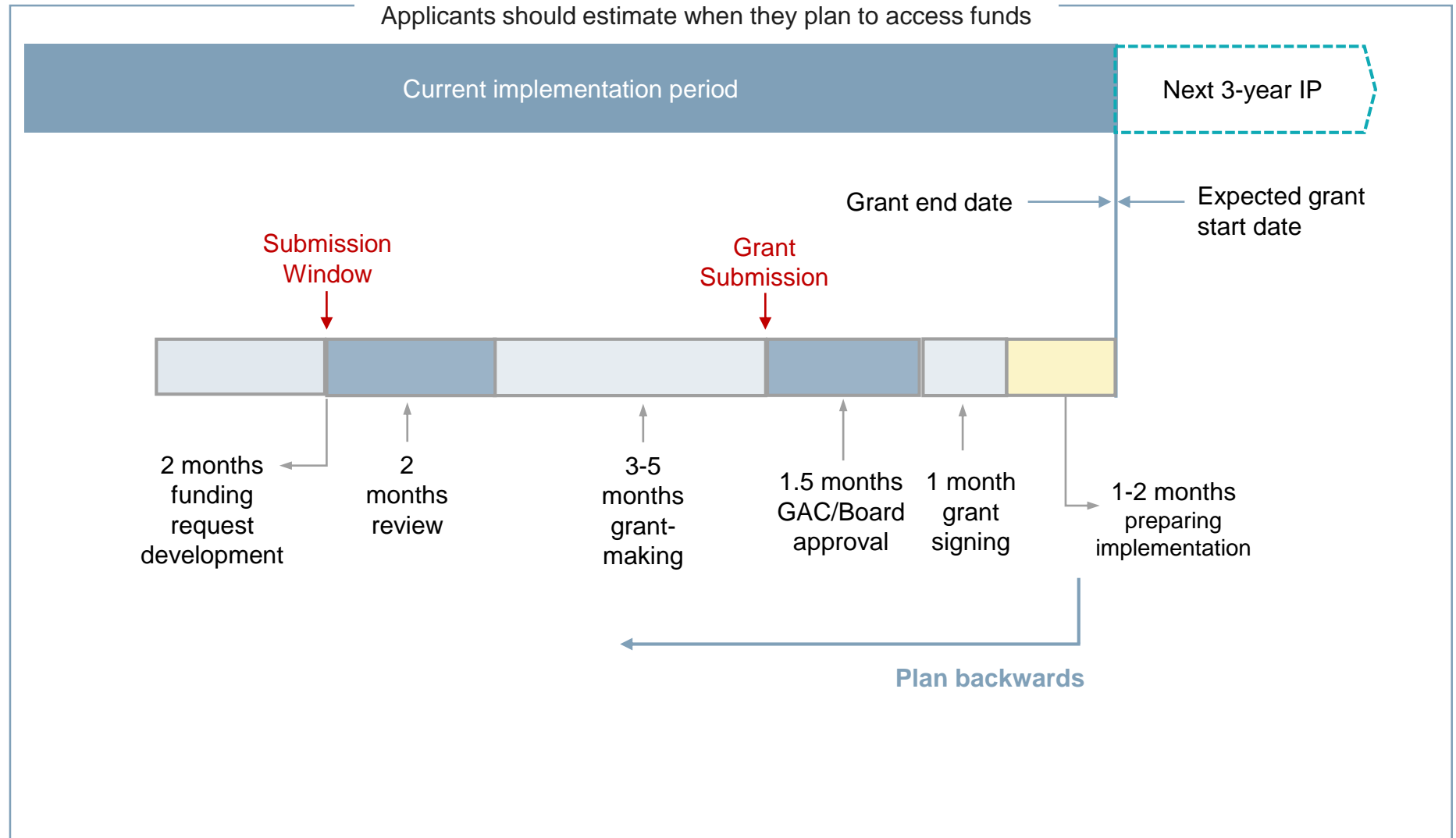
Process Points

The Funding Cycle



Lessons Learnt

Planning Backwards



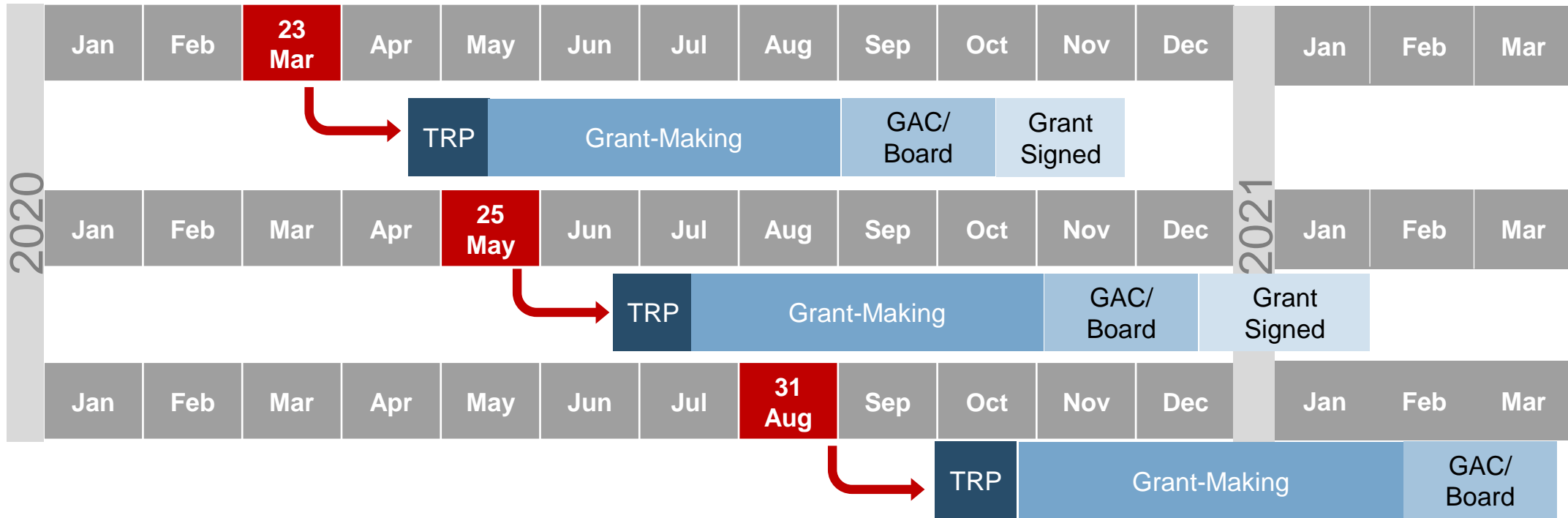
Lessons Learnt

Submission and Review Dates 2020

TRP Window	Submission	Review Dates
Window 1	23 March	27 April – 2 May
Window 2	25 May	29 June – 5 July
Window 3	31 August	5 – 11 October

Lessons Learnt

Timing for Applications and Signing



Lessons Learnt

Support to CCMs

Plan

Discuss the right submission date for the funding request with the CCM and country team

Engage

Help prepare data and analysis to support program split discussions
Support inclusivity and transparency of funding request preparation
Support continuity of knowledge between funding request content and development of grants

Focus

Keep the attention on implementation; the funding request process should not divert focus

Trainings and Resources

For External Stakeholders



Publications



eLearnings



Webinars



Support for
External
Meetings



Video:
Participating in
Country Dialogue

Trainings and Resources

Webinars for External Partners



Webinar Title	Date
An Overview of the Application Process	September 17
What's New and Different for the 2020-2022 Allocation Period	September 24
Tailored for National Strategic Plans Application Approach	October 23
Full Review Application Approach	October 31
Program Continuation Application Approach	November 8
Tailored for Transition and Tailored for Focused Portfolios Application Approaches	November 12
Matching Funds in the 2020-2022 Allocation Period	Early December
Overview of the 2020-2022 Allocations	December 17

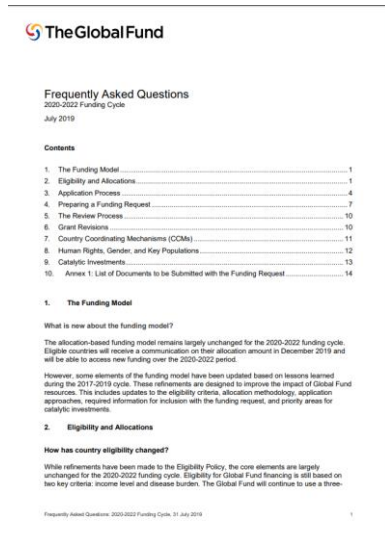
Trainings and Resources

eLearnings: Primarily for Applicants

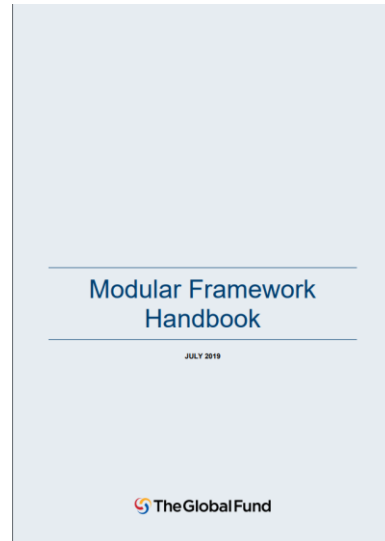


E-LEARNING TITLE	DATE AVAILABLE
An Overview of The Funding Process	Oct
What is New or Different for 2020-2022	Oct
Achieving Inclusive Country Dialogue for CCMs	Oct
How to Apply Using the Tailored for National Strategic Plan Application Approach	Nov
How to Apply Using the Full Review Application Approach	Nov
How to Apply Using the Program Continuation Application Approach	Nov
How to Apply Using the Tailored for Focused Portfolios and Transition Application Approach	Nov
Understanding the Prioritized Above Allocation Request	Nov
Understanding Co-financing, Sustainability, And Transition	Dec
Understand the Performance Framework and Budget	Dec
Understanding the Programmatic Gap and Funding Landscape Table	Dec

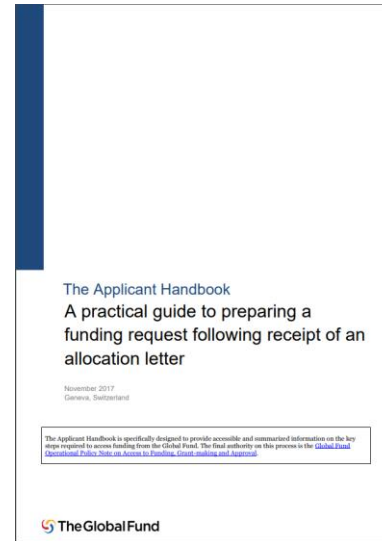
Trainings and Resources Publications



Frequently Asked Questions for the 2020-2022 Funding Cycle



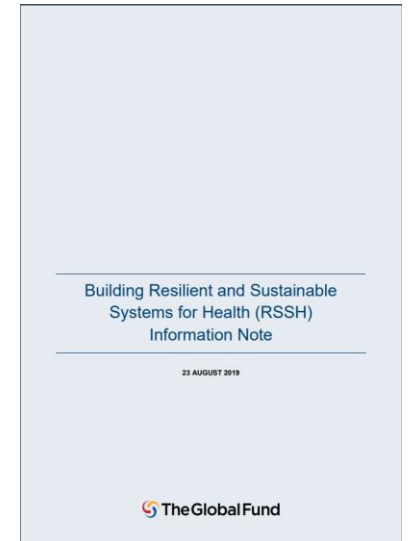
Modular Framework Handbook



The Applicant Handbook



Funding Cycle Brochure



Information Notes And Technical Briefs

Trainings and Resources

Event support



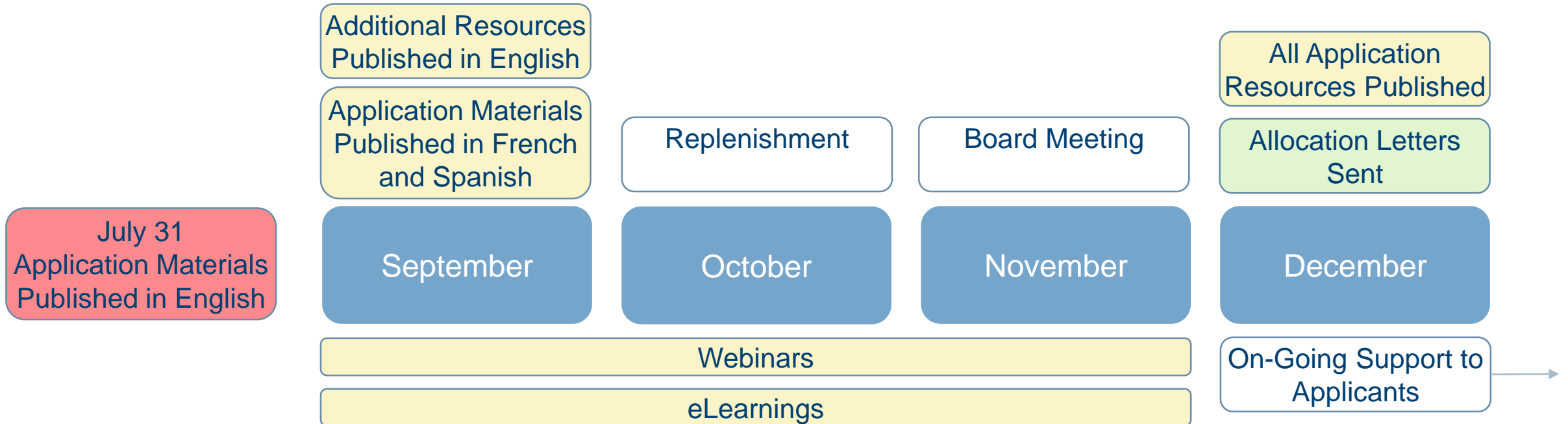
Access to Funding is not coordinating any regional meetings or face-to-face training for external partners but will strive to accommodate requests for support from those who are coordinating events. Contact: A2FTraining@theglobalfund.org

Trainings and Resources

New Video: Participating in Country Dialogue



Trainings and Resources Timeline



Questions?

A2FTraining@theglobalfund.org

Reference

Portfolio Categorization (as of May 2018): Country and Multi-country

FOCUSED

1. Albania	19. Egypt	37. Montenegro
2. Algeria	20. El Salvador	38. Morocco
3. Armenia	21. Gabon	39. Nicaragua
4. Azerbaijan	22. Gambia	40. Panama
5. Belarus	23. Georgia	41. Paraguay
6. Belize	24. Guyana	42. Peru
7. Bhutan	25. Honduras	43. Romania
8. Bolivia	26. Iran (Islamic Republic)	44. Sao Tome and Principe
9. Botswana	27. Jamaica	45. Serbia
10. Bulgaria	28. Kazakhstan	46. Solomon Islands
11. Cape Verde	29. Kosovo	47. Sri Lanka
12. Colombia	30. Kyrgyzstan	48. Suriname
13. Comoros	31. Lao	49. Tajikistan
14. Costa Rica	32. Malaysia	50. Timor-Leste
15. Cuba	33. Mauritania	51. Tunisia
16. Djibouti	34. Mauritius	52. Turkmenistan
17. Dominican Republic	35. Moldova	53. Uzbekistan
18. Ecuador	36. Mongolia	

- Multi-country Western Pacific
- Multi-country Caribbean
- All Regional Grants (except South Africa – TB in Mining and South Africa Elimination 8)

CORE

1. Afghanistan	18. Namibia
2. Angola	19. Nepal
3. Benin	20. Niger
4. Burundi	21. Papua New Guinea
5. Cameroon	22. Rwanda
6. Central African Republic	23. Senegal
7. Chad	24. Sierra Leone
8. Congo (Brazzaville)	25. Somalia
9. Eritrea	26. South Sudan
10. Guatemala	27. Sudan
11. Guinea	28. Swaziland
12. Guinea Bissau	29. Togo
13. Haiti	
14. Korea (DPR)*	
15. Lesotho	
16. Liberia	
17. Madagascar	

- Middle East Response (Iraq, Lebanon, Palestine, Syria, Yemen)
- South Africa – TB in Mining
- South Africa – Elimination 8

HIGH IMPACT

1. Bangladesh	16. Pakistan
2. Burkina Faso	17. Philippines
3. Cambodia	18. South Africa
4. Congo DR	19. Tanzania (inc. Zanzibar)
5. Côte d'Ivoire	20. Thailand
6. Ethiopia	21. Uganda
7. Ghana	22. Ukraine
8. India	23. Viet Nam
9. Indonesia	24. Zambia
10. Kenya	25. Zimbabwe
11. Malawi	
12. Mali	
13. Mozambique	
14. Myanmar	
15. Nigeria	

- RAI (Regional Artemisinin-resistance Initiative)

This categorization was approved by the Global Fund Secretariat in May 2018. The categorization will be updated for the 2020-2022 Allocation Period following the 6th Replenishment and allocation exercise.