



KENYA COORDINATING MECHANISM

CALL FOR EXPRESSION OF INTEREST

**CONSULTANCY SERVICE: MAPPING
EXISTING HEALTH GOVERNANCE
PLATFORMS AND DEVELOPMENT OF
KCM POSITIONING PLAN**

REF: KCM/EOI/4/2022

The Kenya Coordinating Mechanism invites prospective candidates to submit CVs and soft copy of evidence and reference of similar work /assignment/s to be considered for the assignment. Prospective candidates are requested to submit the application to the Chair, Kenya Coordinating Mechanism by 29th July,2022 via info@globalfundkcm.or.ke

Background

The Global Fund's Country Coordinating Mechanism Policy outlines that the CCM should be positioned at the highest level responsible for multi-partner and multi-sectorial development planning in a country. The Global Fund encourages all countries to, align and position the CCM and/ CCM functions within existing health platforms to contribute to central coordination of health programs, investments and pandemic preparedness.

Scope

The Kenya Coordinating Mechanism intends to engage a consultant to Map Existing Health Governance Platforms, and recommend the best option and develop a Positioning plan

Objective for the consultancy

- Identify existing health structures, governance mechanisms and platforms responsible for coordinating the health sector and disease-specific issues.
- Map each identified platform's position within the health systems and in relation to the KCM.
- Support the KCM in developing a Positioning plan based on the three main phases

Tasks and Metrics

Task	Metric
Understand and become familiar with the principle of Positioning. understand the transition lens and how it fits within Positioning.	Positioning e-Learning module and review of Positioning Guidance Note completed.
Undertake a desk review of relevant documents.	<ul style="list-style-type: none">• Governance documents at least 10 health governance bodies reviewed (KCM included).• When available, Sustainability and Transition assessment reviewed.
Interview key stakeholders	At least one stakeholder per governance body interviewed, including one high-level government official.
Map existing health structures.	Organogram showing the positions and relations of at least 10 health governance bodies (KCM included). The organogram can be completed manually or using a software solution provided by the Global Fund (Visio).
Develop a summary report.	Report drafted (2-4 pages) with thematic tables and analysis on: <ul style="list-style-type: none">• Mandate• Composition• Structure• Legal Status• Anchorage level to the national system.

Task	Metric
Organize an in-country consultation meeting.	<ul style="list-style-type: none"> • Presentation on key results. • Moderated sessions on the following phases of the KCM Positioning journey: <i>Coordination, Sustainable Structure.</i> <p>The consultation should bring together stakeholders on coordinating and aligning platforms and include the civil society voice.</p>
Develop the KCM repositioning strategy	<p>Proposal developed on the appropriate Re positioning of the KCM. It should include:</p> <ul style="list-style-type: none"> • Necessary linkages and alignment with other significant coordinating platforms in-country. For the transition context, this includes identifying key national stakeholders, including non-KCM members, that can support national transition planning and implementation, and overall efforts to strengthen sustainability. • Long-term embedment of KCM functions within existing or emerging health platforms, including ensuring strong inclusion of civil society and participating in efforts to strengthen sustainability of Global Fund investments.

Deliverables

Deliverable	Content	Level of effort (LoE)
Mapping of existing health platforms	The map should show the structures and their relationship within the health sector.	14 LoE
Brief summary report (2-4 pages).	An executive summary of key findings, conclusions, options and next steps (including activities for inclusion in baseline assessment work plan – optional based on country context)	2 LoE
Power Point Presentation.	Key findings and conclusions from the mapping exercise.	1 LoE
Re Positioning plan	Plan with cleared outlined deliverables, steps and timeline.	7 LoE
Roll out implementation of the repositioning Plan	Roll out implementation of repositioning plan	1day

Reporting Lines

The consultant will report to the KCM Secretariat, KCM management /Evolution Task Force and present the final report/plan to the KCM

Level of effort /Consultancy fee and period of performance

The consultant has 25 LoE @ USD 297 per day to be used over a period of 2 months.

Evaluation Criteria:

Qualifications 40marks, Experience and Capabilities 30marks, Evidence of similar work or assignment/s 30marks.

Annexes

Annex 1: Example of Positioning map (designed with software Visio).

Annex 2: Example of Positioning map (manually built).

Candidate Profile

A. Qualifications

Essential:

- Advanced degree in Governance, public health, Health systems, public policy, social science, public administration, business administration, and/or related field.

B. Experience

Essential:

- Experience in developing partnerships in Health Sector and in mediating complex issues and deliverables at country, regional and international levels.
- Professional experience in undertaking similar assignments at national or international level and understanding and experience of strategic, organizational, financial and management, including a track record of working in strategy and policy analysis, program planning and management, and/or equivalent experience.
- Provide reference for at least two most recent task/assignments undertaken.
- Solid understanding of the Global Fund processes
- Excellent written and verbal communication skills.

C. Competencies

Languages:

Working level of English as well as knowledge of the local language (particularly the one most widely spoken by key population representatives) are a requirement for this role.

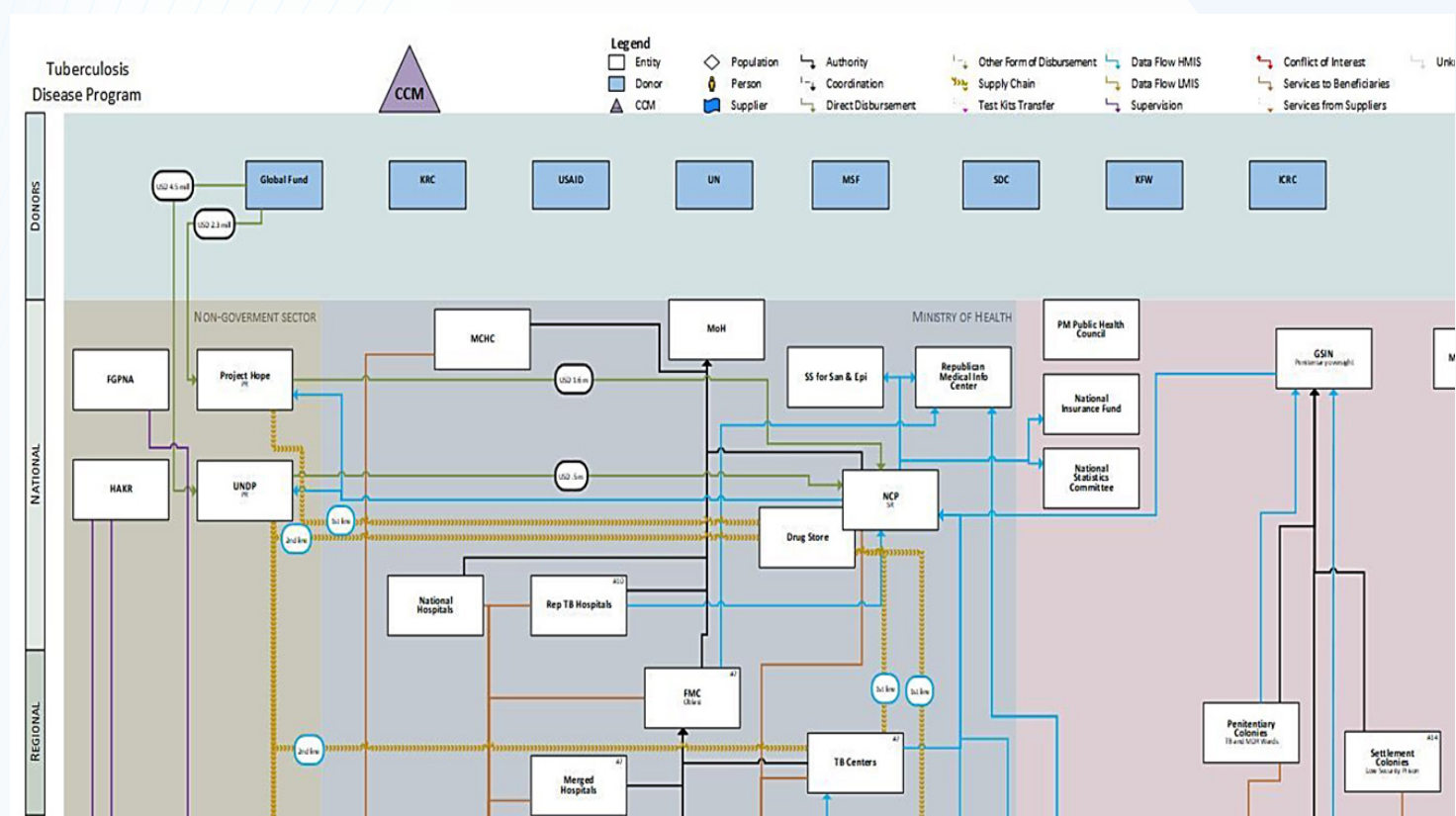
- Previous development experience and/or background with government or private sector desirable.

Check list

Technical skills:

- Robust knowledge of the software Vision.
- Proficiency in Microsoft Office applications especially Excel/ Access, email, internet and websites essential.
- Robust understanding of governance matters.
- High degree of organization, initiative and political awareness.
- Knowledge of public health issues.
- Strong interpersonal skills and proven ability to communicate and interact with high-level officials from the government, NGOs, UN agencies and the private sector.
- Strong writing, presentation and communication skills and IT competences are essential.
- Ability to lead a team and set priorities while handling multiple tasks simultaneously.

Annex 1: Example of Positioning Map (Designed with Visio Software)



Annex 2: Example of Positioning Map (Manually Built)

